



EN Operating instructions

ACTION CAMERA

Trek // FULL HD 1080p WIFI

(DE) Besuchen Sie unsere Website über den folgenden QR Code oder Weblink um weitere Informationen zu diesem Produkt oder die verfügbaren Übersetzungen dieser Anleitung zu finden.

(EN) Visit our website via the following QR Code or web link to find further information on this product or the available translations of these instructions.

(FR) Si vous souhaitez obtenir plus d'informations concernant ce produit ou rechercher ce mode d'emploi en d'autres langues, rendez-vous sur notre site Internet en utilisant le code QR ou le lien correspondant.

(NL) Bezoek onze internetpagina via de volgende QR-code of weblink, voor meer informatie over dit product of de beschikbare vertalingen van deze gebruiksaanwijzing.

(IT) Desidera ricevere informazioni esaustive su questo prodotto in una lingua specifica? Venga a visitare il nostro sito Web al seguente link (codice QR Code) per conoscere le versioni disponibili.

(ES) Visite nuestra página de Internet utilizando el siguiente código QR o el enlace web, para buscar más información sobre este producto o versiones disponibles del presente manual de instrucciones en diferentes idiomas.

(PT) Aceda à nossa página na Internet através do seguinte código QR ou hiperligação, para procurar outras informações sobre este produto ou os idiomas disponíveis deste manual de instruções.

(DK) Ønsker du en udførlig vejledning til dette produkt på et bestemt sprog? Så besøg vores website ved hjælp af følgende link (QR-kode) for tilgængelige versioner.

(PL) Odwiedź naszą stronę internetową, korzystając z kodu QR lub za pośrednictwem linka sieciowego, aby poszukać więcej informacji na temat tego produktu lub dostępnych wersji językowych niniejszej instrukcji obsługi.

(RU) Посетите нашу страницу в сети Интернет, используя QR-код или Web-ссылку, для получения дополнительной информации по данному устройству или для поиска доступных языковых версий данного руководства по эксплуатации.

(TR) Bu ürünle ilgili daha fazla bilgi ile bu kılavuzun geçerli çevirileri için aşağıdaki Barkod Kodundan ya da web bağlantısından internet sitemizi ziyaret edin.



FULL MANUAL & VIDEO DOWNLOAD:



www.bresser.de/download/9685002

APP DOWNLOAD „GoPlusCam“:



SERVICE AND WARRANTY:



www.bresser.de/warranty_terms

About this Instruction Manual



Please read the safety instructions and the operating instructions carefully before use. Keep these instructions for renewed use at a later date. When the device is sold or given to someone else, the instruction manual must be provided to the new owner/user of the product.

Intended Use

This product is intended only for private use. It was developed as an electronic medium for the use of multimedia services.



General Warnings

- **Risk of choking** — Keep packaging material, like plastic bags and rubber bands, out of the reach of children, as these materials pose a choking hazard. This product contains small parts that could be swallowed by children.
- Leaking battery acid can lead to chemical burns. Avoid contact of battery acid with skin, eyes and mucous membranes. In the event of contact, rinse the affected region immediately with a plenty of water and seek medical attention.
- **Risk of electric shock** — Never bend, pinch or pull the power and connecting cables, extensions and adapters. Protect the cables from sharp edges and heat. Before operating, check the device, cables and connections for damage. Never use a damaged unit or a unit with damaged power cables. Damaged parts must be exchanged immediately by an authorised service centre.
- **Risk of property damage!** — Do not disassemble the device. In the event of a defect, please contact your dealer. The dealer will contact the Service Centre and can send the device in to be repaired, if necessary.
- Do not expose the device to high temperatures. Do not short-circuit the device or throw them into a fire. Excessive heat or improper handling could trigger a short-circuit, a fire or an explosion.

- Do not interrupt an on-going data connection to a computer before all data has been transferred. This could lead to data loss for which the manufacturer is not liable.

Notes on cleaning

- Turn off the camera
- Clean the eyepieces and/or lenses only with a soft, lint-free cloth, (e.g. microfibre cloth). To avoid scratching the lenses, use only gentle pressure with the cleaning cloth.
- Only use a dry cloth to clean the exterior of the device. To avoid damaging the electronics, do not use any cleaning fluid.
- Clean the protective case after each use with clear, clean water and dry it thoroughly.

EC Declaration of Conformity



Bresser GmbH has issued a Declaration of Conformity¹ in accordance with applicable guidelines and corresponding standards. This can be viewed any time upon request.

Disposal



Dispose of the packaging materials properly, according to their type, such as paper or cardboard. Contact your local waste-disposal service or environmental authority for information on the proper disposal.



Do not dispose of electronic devices in the household garbage!

As per the Directive 2002/96/EC of the European Parliament on waste electrical and electronic equipment and its adaptation into German law, used electronic devices must be collected separately and recycled in an environmentally friendly manner. Empty, old batteries must be disposed of at battery collection points by the consumer. You can find out more information about the disposal of devices or batteries produced after 6 January 2006 from your local waste-disposal service or environmental authority.



The integrated battery must only be removed for disposal. Opening the device housing can damage the unit.

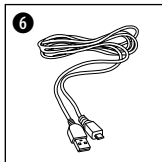
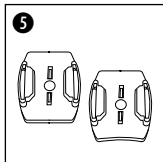
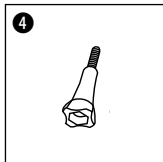
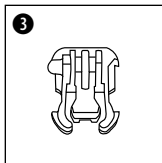
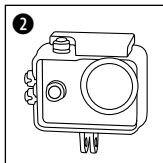
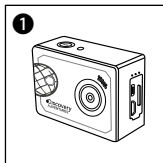
Drain the battery completely before disposal. Remove all the screws in the housing and open the device housing. Remove the connections to the battery and remove it. Cover the open contacts with tape and package the battery in such a way that it cannot shift in the packaging.

Warranty & Service

The regular guarantee period is 2 years and begins on the day of purchase. To benefit from an extended voluntary guarantee period as stated on the gift box, registration on our website is required. You can consult the full guarantee terms as well as information on extending the guarantee period and details of our services at www.bresser.de/warranty_terms.

Scope of delivery

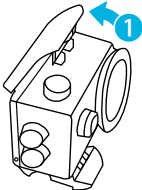
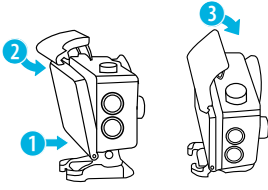
EN



- ❶ Camera
- ❷ Waterproof case
- ❸ Retaining clip for Base mount
- ❹ Thumb knob
- ❺ Base for flat and curved surface
(e.g. as helmet mount)
- ❻ USB cable

First Steps

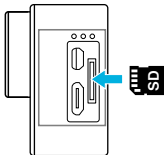
How to open and close the waterproof case:

 <p>A line drawing of the waterproof case with the clamp being lifted upwards. A blue arrow labeled '1' points to the upward movement of the clamp.</p>	 <p>Two line drawings showing the closing process. The first drawing shows the clamp being snapped onto the hinge, indicated by a blue arrow labeled '2'. The second drawing shows the clamp being pressed down, indicated by a blue arrow labeled '3'.</p>
<p>How to open: Press the clamp upward, to open the housing (1).</p>	<p>How to close: Press the case door all the way down (1) and then snap the clamp to the hinge (2). Now, simply press the clamp down (3) to close.</p>

Inserting microSD card*

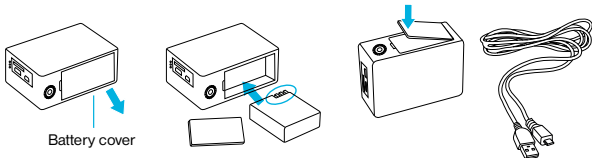
- Class 10 SDHC or higher required
- Capacity up to 32 GB

Note: For best performance, please choose a branded microSD card and format it on your computer before use. Unbranded cards are not guaranteed to work flawlessly.



Installing or removing the battery


- A. Press on the battery cover to open it
- B. Correctly install the battery into the camera.
- C. Remove Battery: Simply open battery cover to take the battery out.

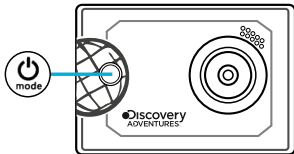


Charging

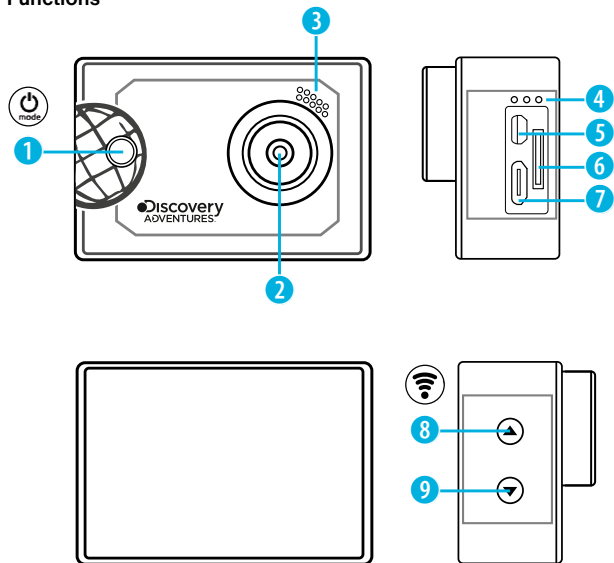
- A. Charging can be done by connecting the action camera to a computer via the usb cable.
- B. The action camera can record video while charging
- C. Charging of the action camera can be done even when it's powered off.

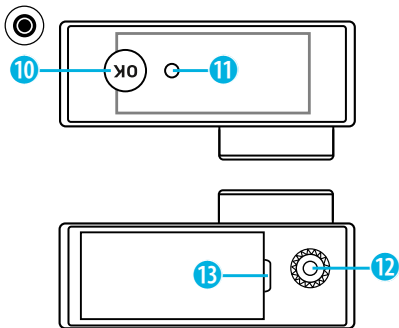
Turning camera on and off

Press and hold the power switch [] for 3 to 5 seconds to turn the camera on or off.



Functions





1. Power button (on/off)
& Menu & Mode button



2. Lens

3. Loudspeaker

4. Microphone

5. Micro USB port

6. microSD port

7. Micro HDMI port

8. UP button
+ Wi-Fi button



9. DOWN button

10. OK button



11. Indicator light

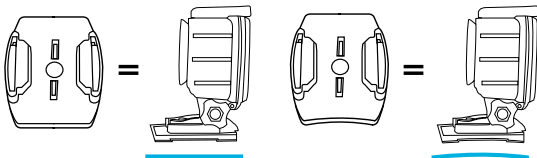
12. Tripod thread

13. Battery cover

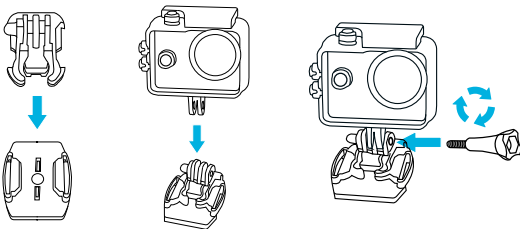
How to use the Base mount

Flat surface or curved surface mount:

Choose the flat or curved base depending on the surface.



Base mount (e.g. for helmet mount):



Wi-Fi Mode / Camera App

Install the app on your smartphone. Look for „GoPlus Cam“ in the AppStore or Google Play Store. Connect the camera to your smartphone (find a network with the name „SportsDV“). Use the displayed password, usually „12345678“. Start the „GoPlus Cam“ app now.

Technical Data

Lens	140° wide angle
Waterproof Case	Waterproof up to 30 m
Resolution of photos	12 MP (4048x3040), 8 MP (3264x2448), 3 MP (2048x1536), VGA (640x480)
Resolution of videos	1080p (30fps) , 720p (30fps)
Video format	AVI
Video compression (codec)	mjpeg
Storage	microSD Memory card (up to 32 GB) (not included) (SDHC Class 10 or higher required)
Frequency of optical source	50Hz/60Hz
Ports	Micro-USB, Micro-HDMI, microSD card slot
Dimensions	59x41x28 mm
Weight	55g

Note: Specifications could be subject to change due to upgrading or updating.
Please regard the actual product as the standard.



© 2017 & TM Discovery Communications, LLC. Discovery Adventures™ and logo are trademarks of Discovery Communications, LLC, used under license. All rights reserved.

OFFICIAL LICENSED PRODUCT



Bresser GmbH
Gutenbergstr. 2
DE-46414 Rhede
www.bresser.de · info@bresser.de

Errors and technical changes reserved.